



## BARHAM PRIMARY SCHOOL

Welcome back to the Autumn Term at Barham Primary School.

**Did you know? There are 175 non-school days a year and ONLY 190 days of school!**

We appreciate the challenges that some parents face when booking holidays, particularly during the school holidays. However, regular attendance at school is vital in helping children and young people to achieve their full potential and get the best possible start in life. There is plenty of time in the year where children are not at school. This gives families the opportunities to spend time together.

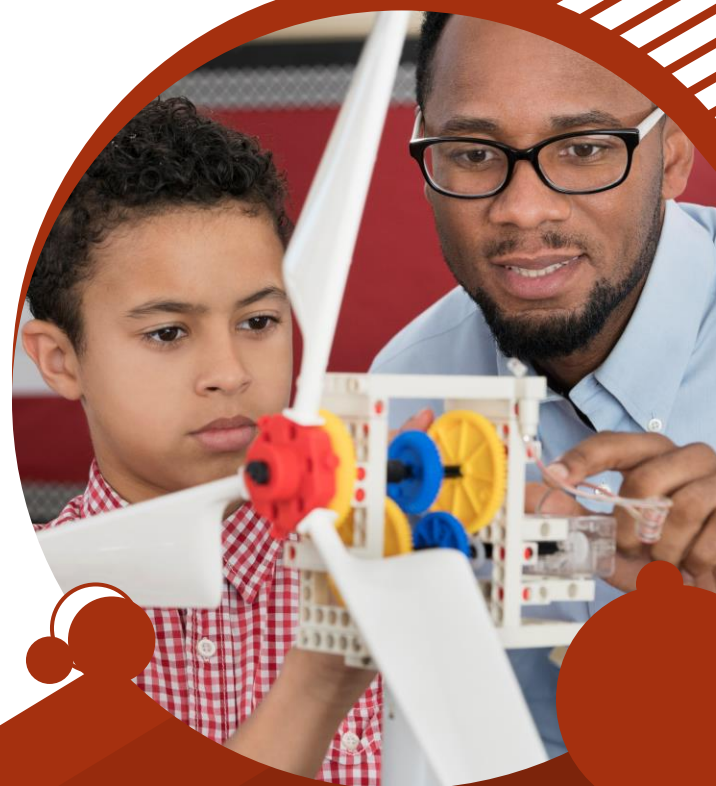
# ATTENDANCE NEWSLETTER

November 2023

### Every school day counts!

Children are expected to be in school every day. Under Section 36 of the Education Act 1944, parents of children of compulsory school age have a legal responsibility to ensure that they receive full-time education and to get their child to school regularly and on time. High attendance rates correspond to increased chances of success; every school day counts towards your child's future. Days off can seriously impact on learning meaning that children miss vital information. It can also impact on their self esteem and well-being.

Our attendance **target is 97%** and we expect your child to be **in school on time every day** so that we can maximise every possible learning opportunity. Keeping high attendance in the school is extremely important for the success of our students. The children have a much better school experience all round if they are consistently present and on time so thank-you for supporting us.



### Attendance is everybody's business!

Our school acknowledges that each family's circumstances are different and works in partnership with parents to provide the best education for every child. Pupils' welfare is of paramount importance to us and we believe that regular attendance and punctuality throughout the year is essential for their success and fulfilment. Please do come and see us if you have any concerns.





**90% might be a fantastic high score in a test...**

**90% attendance rate is NOT**

**it means you are missing the equivalent of 20 days of school!!!**

If your child's attendance starts falling below 96%, the school will notify you and work together to ensure that attendance goes back up.

In the event where a child's attendance falls behind 90%, the Education Welfare Officer will be notified and appropriate action will be taken. Attendance is monitored very closely on a weekly basis. If a child's absence does fall below this level they are considered to be persistently absent or severely absent if it falls under 50%. It is parents' responsibility to inform schools of the reason for a child's absence as soon as possible by calling or emailing the school office by 9 am each day. We also ask that ALL medical appointments are made before and after school.

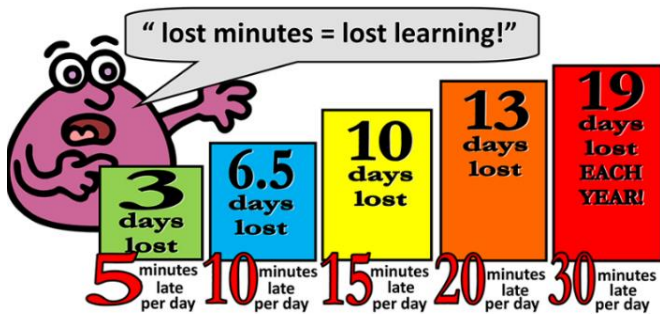
### Reporting your child's absence

To report your child's absence from school due to sickness, please contact the school with a reason for your child's absence. Either call the school on 0208 902 3706 **before 8:30am** and leave a message, or send an email to the school office, [admin@barham.brent.sch.uk](mailto:admin@barham.brent.sch.uk) Please ensure you make non-urgent appointments e.g. to the dentist in the school holidays or after school.

### Emergency Leave

Requests for leave can only be granted in exceptional circumstances, and a holiday would not be considered exceptional. Requests for leave must also be made to the school in advance. To do this please come into the school office to complete the necessary Leave in Term Time application. A member of SLT will meet with you to look into alternatives to avoid a long absence from school. Parents may receive a penalty notice if their child is absent from school without permission.

### Attendance Ladder



Every school day counts BUT every minute is equally important!

### Punctuality

Children must be in school **on time**, this means standing in their class line in the school playground **by 8.45am** ready to be picked up by the class teacher. When a child arrives late for school, they miss the introduction to the day and valuable learning time such as Phonics lessons and Morning Challenges. It is also vital that children are collected on time at the end of the day. Being late for school and being picked up late can also be very distressing for the child. Punctuality is monitored very closely on a weekly basis.